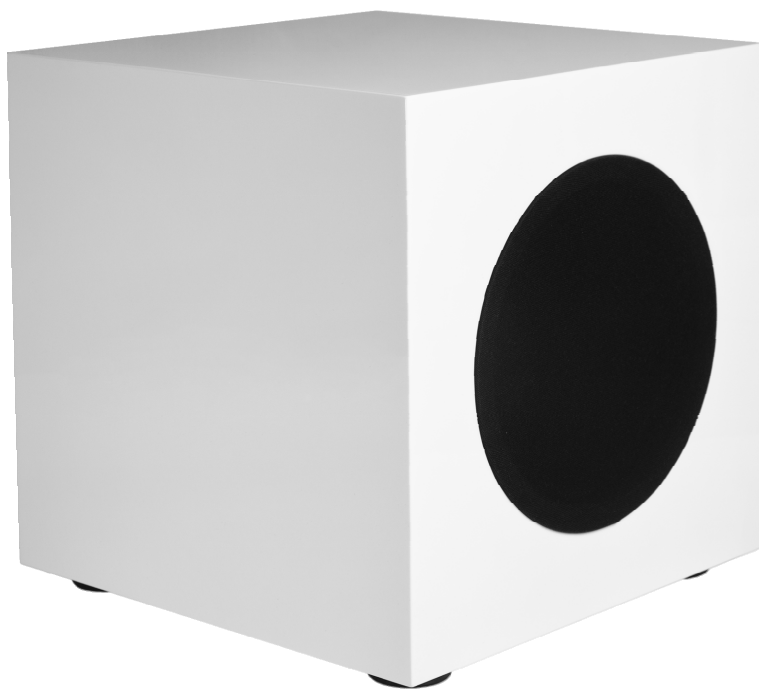


PROFEL NUOVO GAMBA

high-end active subwoofer
with integrated automated DSP room correction system



Profel Nuovo Gamba

high-end active subwoofer with integrated automated room correction system

Profel Nuovo Gamba is created according to the philosophy of Profel Nuovo High End series where design, sound quality, and advanced technology provide a reference-level sound experience for the comfort of your home.

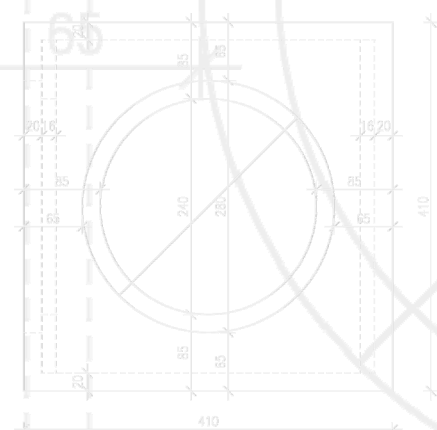


Nuovo Gamba provides a new level of sound experiences for the listener with breathtaking authority when enjoying high fidelity music or completely immersing into multichannel programs. Bass reproduction is finely detailed and transparent, yet extremely dynamic with enormous power reserves. *Nuovo Gamba* is recognized for conserving the original sound material truthfully and to integrate perfectly with other parts of the sound reproduction system.



Nuovo Gamba incorporates a variety of innovative technology making the subwoofer ahead of its class. Integrated world leading *DSpeaker Anti-Mode* (by VLSI Solutions) automatic DSP-based room correction technology makes positioning the speaker extremely simple. Once calibrated to a preferred listening position or a wider listening area, the unit automatically corrects sonic anomalies produced by room acoustics such as resonances and room modes. It also offers different correction modes for customized experiences.

The sturdy closed cabinet has two 10" long-throw woofer drivers facing opposite sides outwards the subwoofer. This positioning is ideal to even out kinetic forces that may otherwise induce structural resonations. Both woofer elements are individually powered by 250W high-efficiency analogue amplifiers. Multiple electronic safety circuits protect the elements and electronics from overloading caused by extreme high signal levels.



Adaptation of the subwoofer to different user environments is made simple with versatile controls and connectors. Connecting the speaker to your system proceeds via selectable signal connectors; unbalanced RCA and balanced XLR sockets are available for signal input and output. Phase control, variable High cut (low-pass) filter, and a variable Low cut (high-pass) filter for output signals work together to ensure best integration with other components of your system.

Profel Nuovo Gamba

high-end active subwoofer with integrated automated room correction system

Technical details

- ❖ 2x 10" (25cm) long throw woofers
- ❖ 250W integrated analogue amplifier for each driver separately
- ❖ frequency response 20-150Hz (+/-3dB)
- ❖ integrated automatic ANTI-MODE room adjustment DSP control module
- ❖ calibration microphone included
- ❖ single or dual point measurement filtering
- ❖ normal, bypass, LIFT 25 and 35 DSP filtering modes
- ❖ "Gain", "High cut", and "Low cut" ("Line out") adjustments
- ❖ phase control switch: 0, bypass (subwoofer unit mute), 180
- ❖ selectable XLR and RCA sockets for both signal input and output, unbalanced input signal can be converted to balanced output through XLR output
- ❖ dimensions: 390 x 390 x 390 mm, weight: 27kg
- ❖ closed/sealed double wall MDF cabinet
- ❖ available in black and white matt structure finish or in high-gloss black or white hard lacquer finish (accessory)

The logo for Profel, featuring the word "Profel" in a stylized, handwritten-style script font.

active loudspeakers

Passion for perfection

Roosinpohjantie 919
42440 KOSKENPÄÄ
SUOMI FINLAND
www.profel.fi

FAX: +358 (0)20 775 6635
TEL.: +358 (0)20 775 6630
info@profel.fi